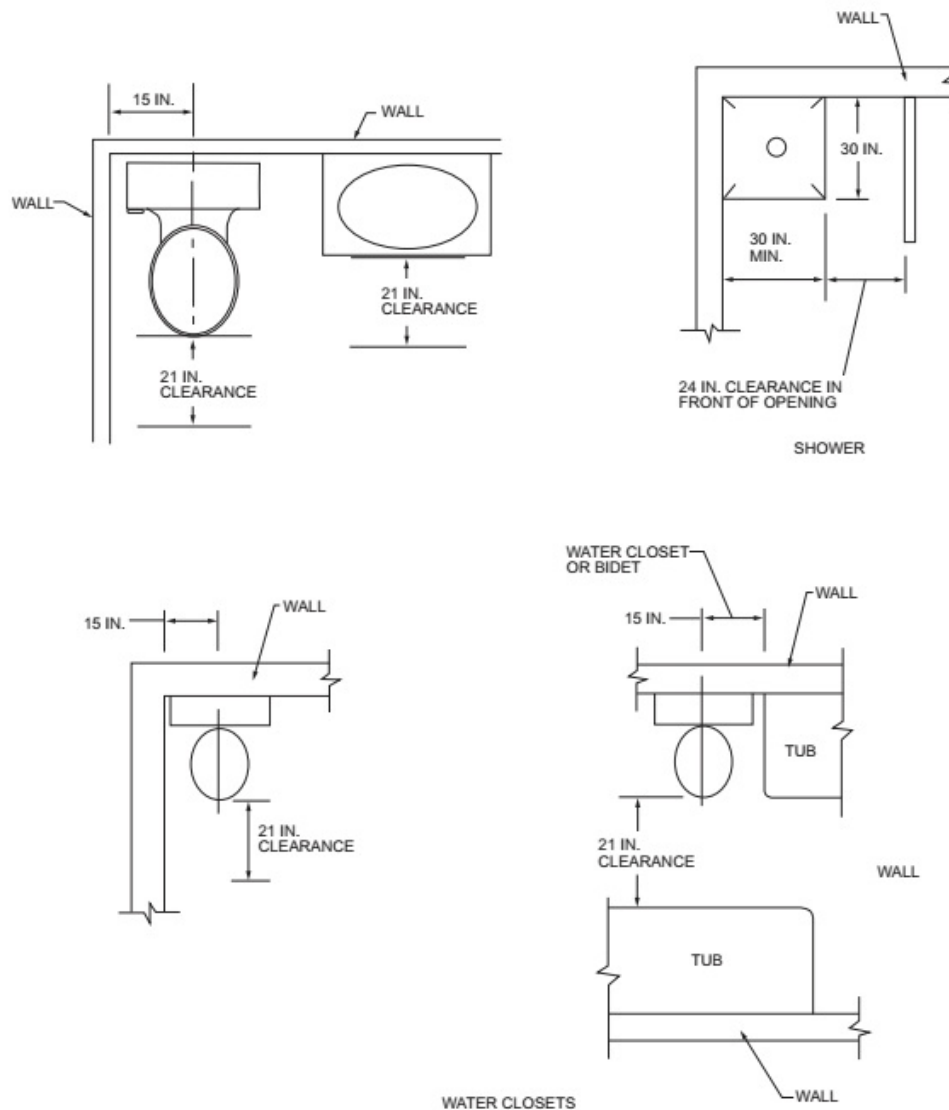


Toilet, Bath, and Shower Spaces

R307.1 Space Required

Fixtures shall be spaced in accordance with Figure R307.1, and in accordance with the requirements of Section P2705.1.



**FIGURE R307.1
MINIMUM FIXTURE CLEARANCES**

R307.2 Bathtub and Shower Spaces

Bathtub and shower floors and walls above bathtubs with installed shower heads and in shower compartments shall be finished with a nonabsorbent surface. Such wall surfaces shall extend to a height of not less than 6 feet (1829 mm) above the floor.