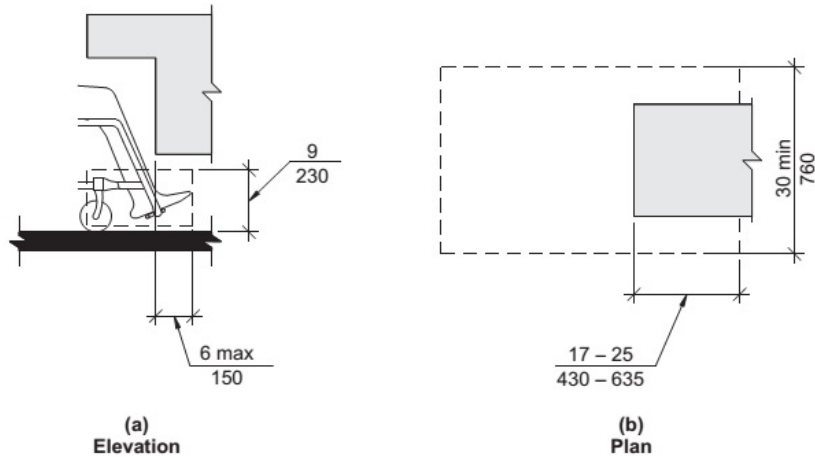
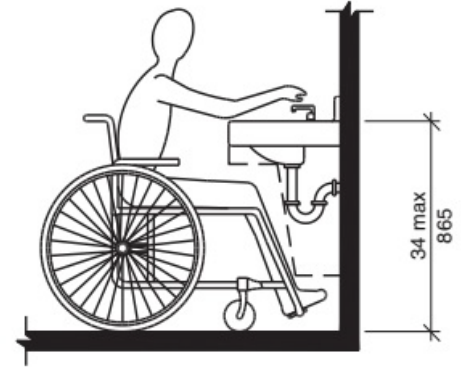


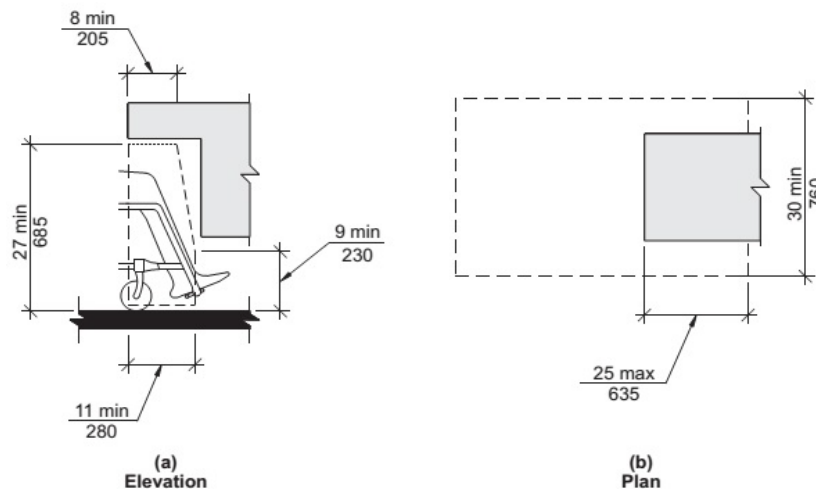
ACCESSIBILITY REQUIREMENTS FOR SINKS

General Criteria

- Maximum height to sink rim or counter surface shall be 34-inches (606.3)
- A clear floor space of 30-inches by 48-inches shall be provided and positioned for forward approach (606.2)
- Maximum counter/sink depth of 25-inches
- Minimum toe clearance of 9-inches
- Minimum knee clearance of 27-inches



**Figure 306.2
Toe Clearance**



**Figure 306.3
Knee Clearance**

ACCESSIBILITY REQUIREMENTS FOR TOILETS

General Criteria

- Minimum clearance of 60-inches wide by 56-inches deep (604.3)
- Centerline of toilet shall be 16-inches to 18-inches from sidewall (604.2)
- Seat height of 17-inches to 19-inches (604.4)
- Grab bars per figures provided (604.5)
- Flush control on open side of toilet (604.6)
- Dispensers per figure provided (604.7)

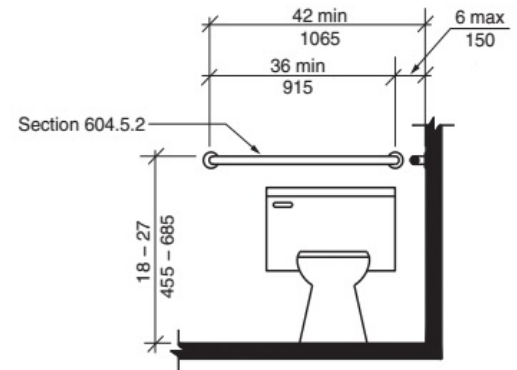
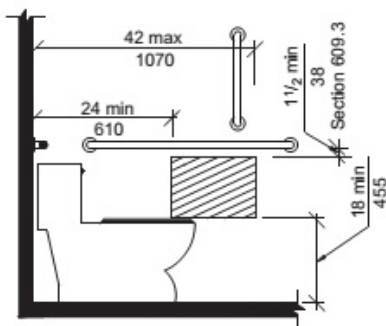
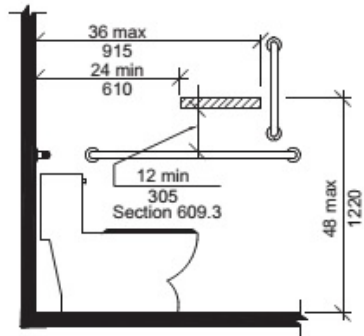


Figure 604.5.1

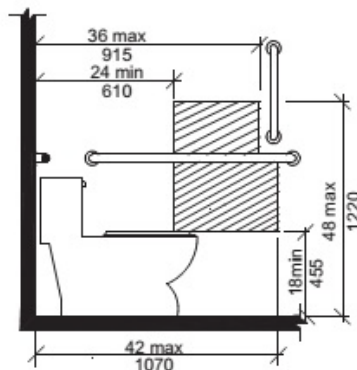
Side Wall Grab Bar at Water Closets



(a) Protruding Dispenser Below Grab Bar



(b) Protruding Dispenser Above Grab Bar



(c) Recessed Dispenser

**Figure 604.7
Dispenser Outlet Location**

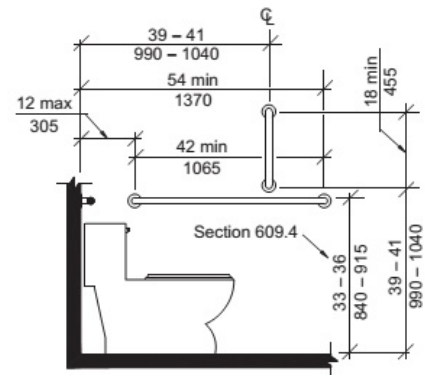


Figure 604.5.1

Side Wall Grab Bar at Water Closets

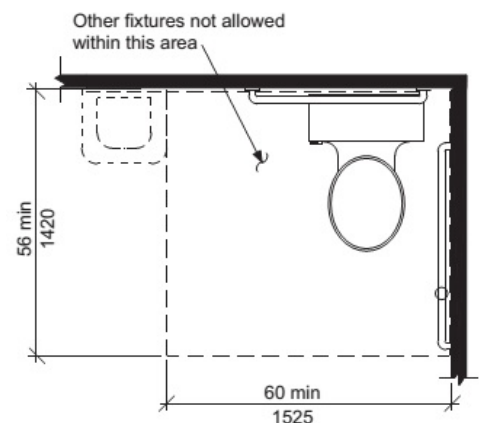
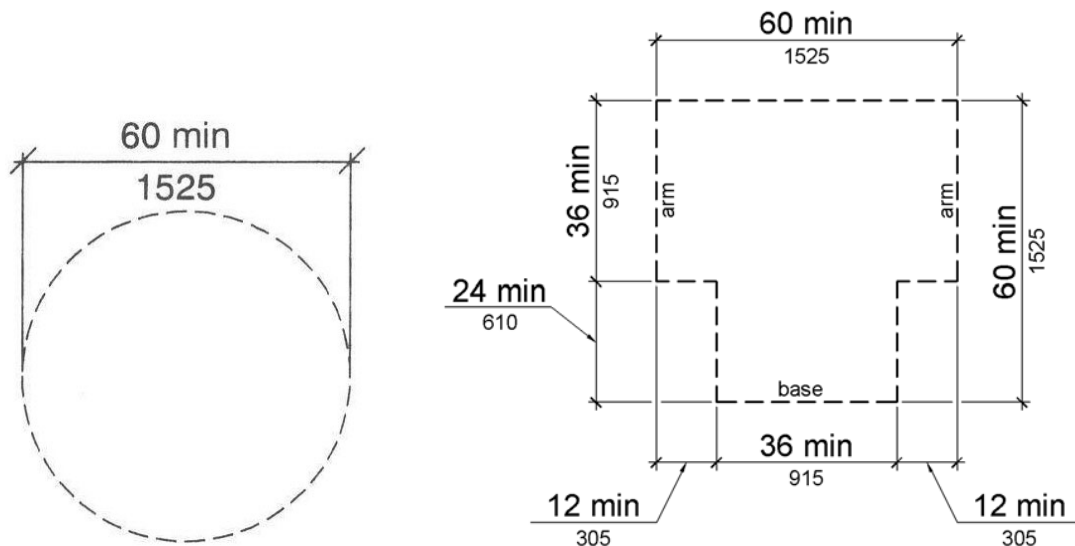


Figure 604.3

Size of Clearance for Water Closet

ACCESSIBILITY REQUIREMENTS FOR TOILET ROOMS AND COMPARTMENTS

Either the standard 60" turning Circle or the T-shaped turning space shown on this handout are allowed. Doors can swing into this turning space but cannot swing into the clearance around the toilet or the sink (see other handouts). This turning space can overlap with the clearance requirements of the other handouts (toilets and sinks).



Either of these turning spaces can use a knee and toe clearance underneath a sink as part of their turning area.

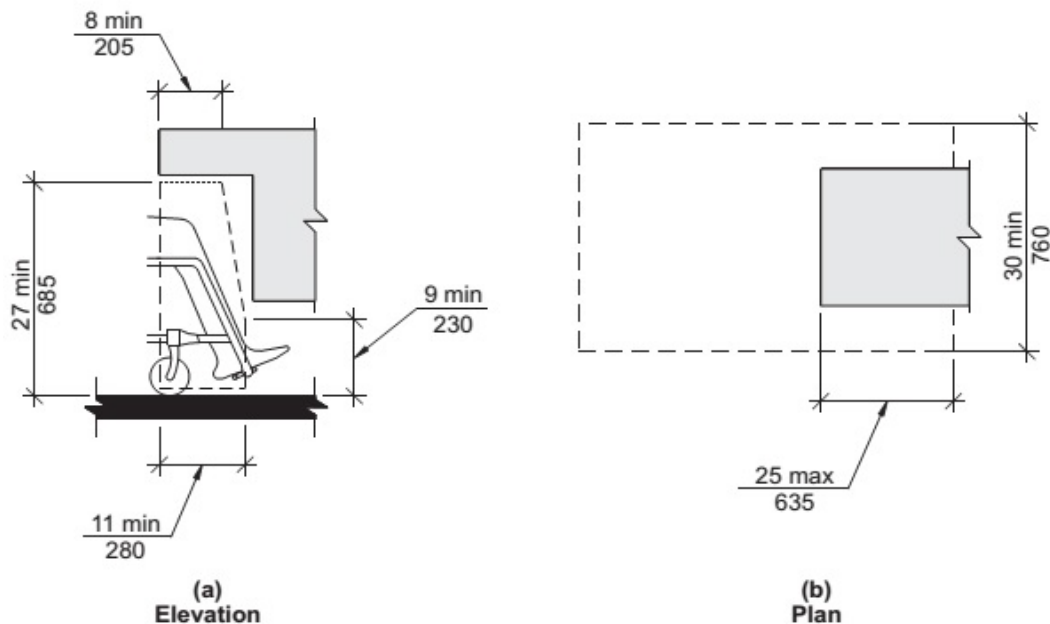


Figure 306.3
Knee Clearance

ACCESSIBILITY REQUIREMENTS AT DOORS

Please note that these drawings and this information is not meant to be a comprehensive list of all the requirements that apply to doors. These are simply the most commonly asked questions and the most common problems encountered during construction. The actual verbiage of the requirements can be obtained from the 2009-A117.1 standard. Many other requirements exist relative to accessibility and maneuvering at all doors and doorways. Please ask questions before you install something.

In drawing (a) below, the only door that will meet this minimum clear width is a 36" wide door. That is why you will see all doors in commercial buildings being 3'-0" wide.

In drawing (b) below, the most common problem with sliding doors is the handle, which may prevent the door from opening to 32" wide. Make sure before buying the door hardware.

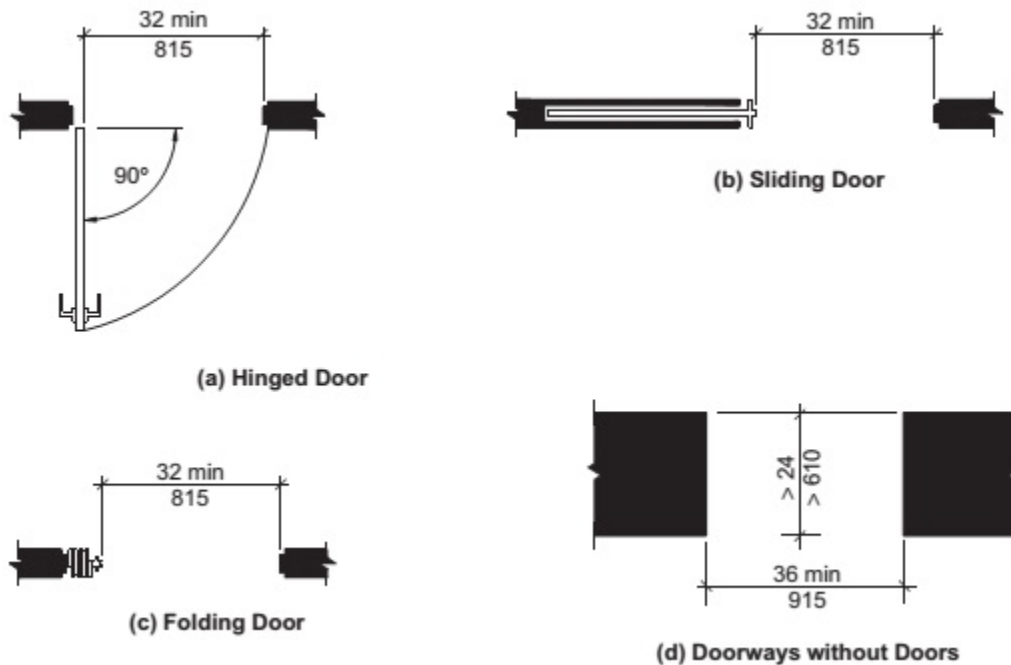


Figure 404.2.
Clear Width of Doorways

ACCESSIBILITY REQUIREMENTS FOR MANEUVERING CLEARANCE AT DOORS

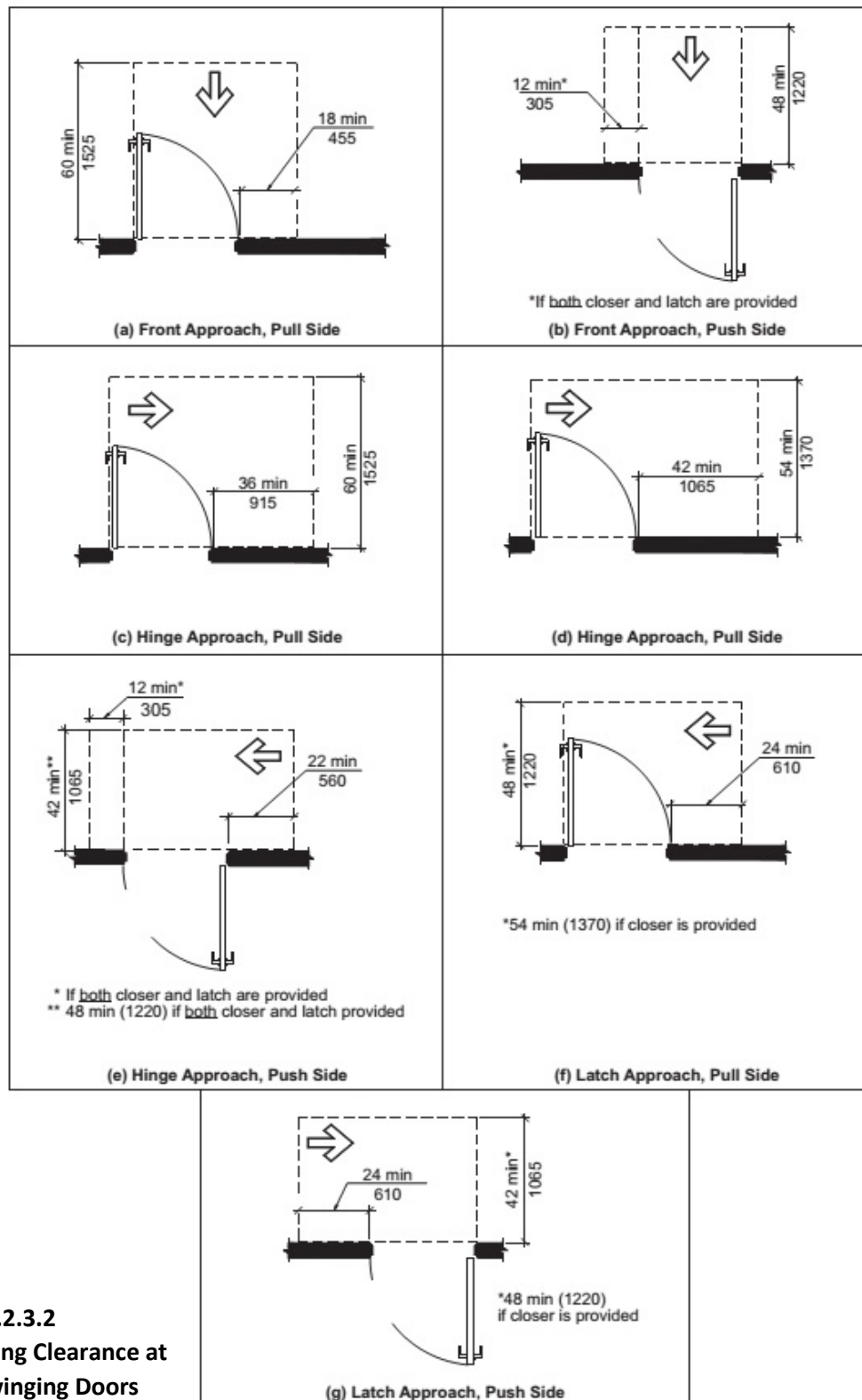


Figure 404.2.3.2
Maneuvering Clearance at
Manual Swinging Doors