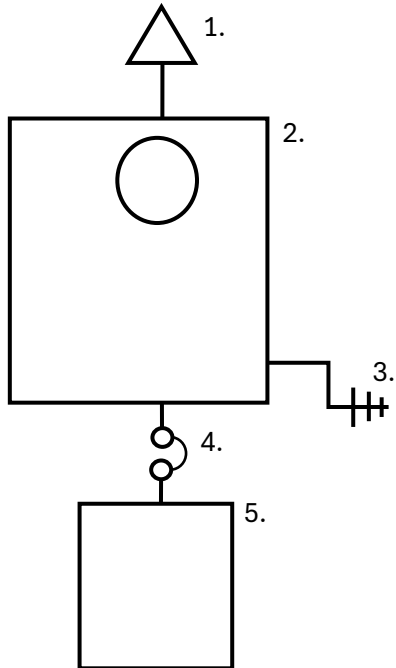


Simplified Electrical Diagram

One-Line Diagram



- | | |
|----|--|
| 1. | Utility Service Connection |
| | Service Type: _____ |
| | _____ |
| 2. | All-in-one Service/Primary Distribution Panel |
| | _____ A Service |
| | Panel Model No. _____ |
| | _____ |
| 3. | Grounding |
| | Method(s): _____ |
| | _____ |
| 4. | Sub Panel Disconnect or OCPD |
| | _____ |
| 5. | Sub Panel |
| | _____ A Panel |
| | _____ AWG Feeders |
| | _____ AWG GEC |

Panel Schedule

_____ A / _____ Phase / ____-Wire / _____ Volt

[illegible]

Load Calculation

See NEC Article 220. For simple systems, provide hand calculation below. Or, for more expansive residential systems, see <https://ask-the-electrician.com/residential-electrical-load-calculation.html>