

















Item No.	Description	Quantity	Unit Price	Total Price
1000	1000	1	1000	1000
1001	1001	1	1001	1001
1002	1002	1	1002	1002
1003	1003	1	1003	1003
1004	1004	1	1004	1004
1005	1005	1	1005	1005
1006	1006	1	1006	1006
1007	1007	1	1007	1007
1008	1008	1	1008	1008
1009	1009	1	1009	1009
1010	1010	1	1010	1010
1011	1011	1	1011	1011
1012	1012	1	1012	1012
1013	1013	1	1013	1013
1014	1014	1	1014	1014
1015	1015	1	1015	1015
1016	1016	1	1016	1016
1017	1017	1	1017	1017
1018	1018	1	1018	1018
1019	1019	1	1019	1019
1020	1020	1	1020	1020
1021	1021	1	1021	1021
1022	1022	1	1022	1022
1023	1023	1	1023	1023
1024	1024	1	1024	1024
1025	1025	1	1025	1025
1026	1026	1	1026	1026
1027	1027	1	1027	1027
1028	1028	1	1028	1028
1029	1029	1	1029	1029
1030	1030	1	1030	1030
1031	1031	1	1031	1031
1032	1032	1	1032	1032
1033	1033	1	1033	1033
1034	1034	1	1034	1034
1035	1035	1	1035	1035
1036	1036	1	1036	1036
1037	1037	1	1037	1037
1038	1038	1	1038	1038
1039	1039	1	1039	1039
1040	1040	1	1040	1040
1041	1041	1	1041	1041
1042	1042	1	1042	1042
1043	1043	1	1043	1043
1044	1044	1	1044	1044
1045	1045	1	1045	1045
1046	1046	1	1046	1046
1047	1047	1	1047	1047
1048	1048	1	1048	1048
1049	1049	1	1049	1049
1050	1050	1	1050	1050
1051	1051	1	1051	1051
1052	1052	1	1052	1052
1053	1053	1	1053	1053
1054	1054	1	1054	1054
1055	1055	1	1055	1055
1056	1056	1	1056	1056
1057	1057	1	1057	1057
1058	1058	1	1058	1058
1059	1059	1	1059	1059
1060	1060	1	1060	1060
1061	1061	1	1061	1061
1062	1062	1	1062	1062
1063	1063	1	1063	1063
1064	1064	1	1064	1064
1065	1065	1	1065	1065
1066	1066	1	1066	1066
1067	1067	1	1067	1067
1068	1068	1	1068	1068
1069	1069	1	1069	1069
1070	1070	1	1070	1070
1071	1071	1	1071	1071
1072	1072	1	1072	1072
1073	1073	1	1073	1073
1074	1074	1	1074	1074
1075	1075	1	1075	1075
1076	1076	1	1076	1076
1077	1077	1	1077	1077
1078	1078	1	1078	1078
1079	1079	1	1079	1079
1080	1080	1	1080	1080
1081	1081	1	1081	1081
1082	1082	1	1082	1082
1083	1083	1	1083	1083
1084	1084	1	1084	1084
1085	1085	1	1085	1085
1086	1086	1	1086	1086
1087	1087	1	1087	1087
1088	1088	1	1088	1088
1089	1089	1	1089	1089
1090	1090	1	1090	1090
1091	1091	1	1091	1091
1092	1092	1	1092	1092
1093	1093	1	1093	1093
1094	1094	1	1094	1094
1095	1095	1	1095	1095
1096	1096	1	1096	1096
1097	1097	1	1097	1097
1098	1098	1	1098	1098
1099	1099	1	1099	1099
1100	1100	1	1100	1100

MADE IN THE U.S.A.  
 NATIONAL BUREAU OF STANDARDS  
 U.S. DEPARTMENT OF COMMERCE  
 Gaithersburg, Maryland 20899  
 Telephone: (301) 975-3000

Sheet No. 1000



1.00' (10") MINIMUM  
 1.5" (38mm) MINIMUM

MINIMUM REBAR COVERAGE  
 2" (51mm) MINIMUM  
 2" (51mm) MINIMUM  
 2" (51mm) MINIMUM

1.00' (10") MINIMUM  
 1.5" (38mm) MINIMUM

2.00' (510mm)  
 1.5" (38mm) MINIMUM

CONCRETE REINFORCING  
 2" (51mm) MINIMUM  
 2" (51mm) MINIMUM  
 2" (51mm) MINIMUM

CONCRETE REBAR  
 2" (51mm) MINIMUM

2.00' (510mm)

## DETAIL A

TYPICAL BEDDING AND BACK-FILL DETAIL



12" (305mm)  
 12" (305mm)  
 12" (305mm)

## EXTRUDED CURB DETAIL

ATS

1.00' (10") MINIMUM

1.00' (10") MINIMUM

CONCRETE REBAR  
 2" (51mm) MINIMUM



CONCRETE REBAR  
 2" (51mm) MINIMUM

## CURB/CONCRETE PAVEMENT DETAIL

ATS



STATE OF FLORIDA  
 PROFESSIONAL ENGINEER

12/15/2011  
 12/15/2011

12/15/2011

12/15/2011



CONCRETE PAVER CROSSWALK PLAN  
N72



ACTIVITY BASE PLAN  
SECTION 4-A-A  
N72

**DETAIL C**  
CONCRETE PAVER CROSSWALK DETAIL

CONCRETE PAVER CROSSWALK

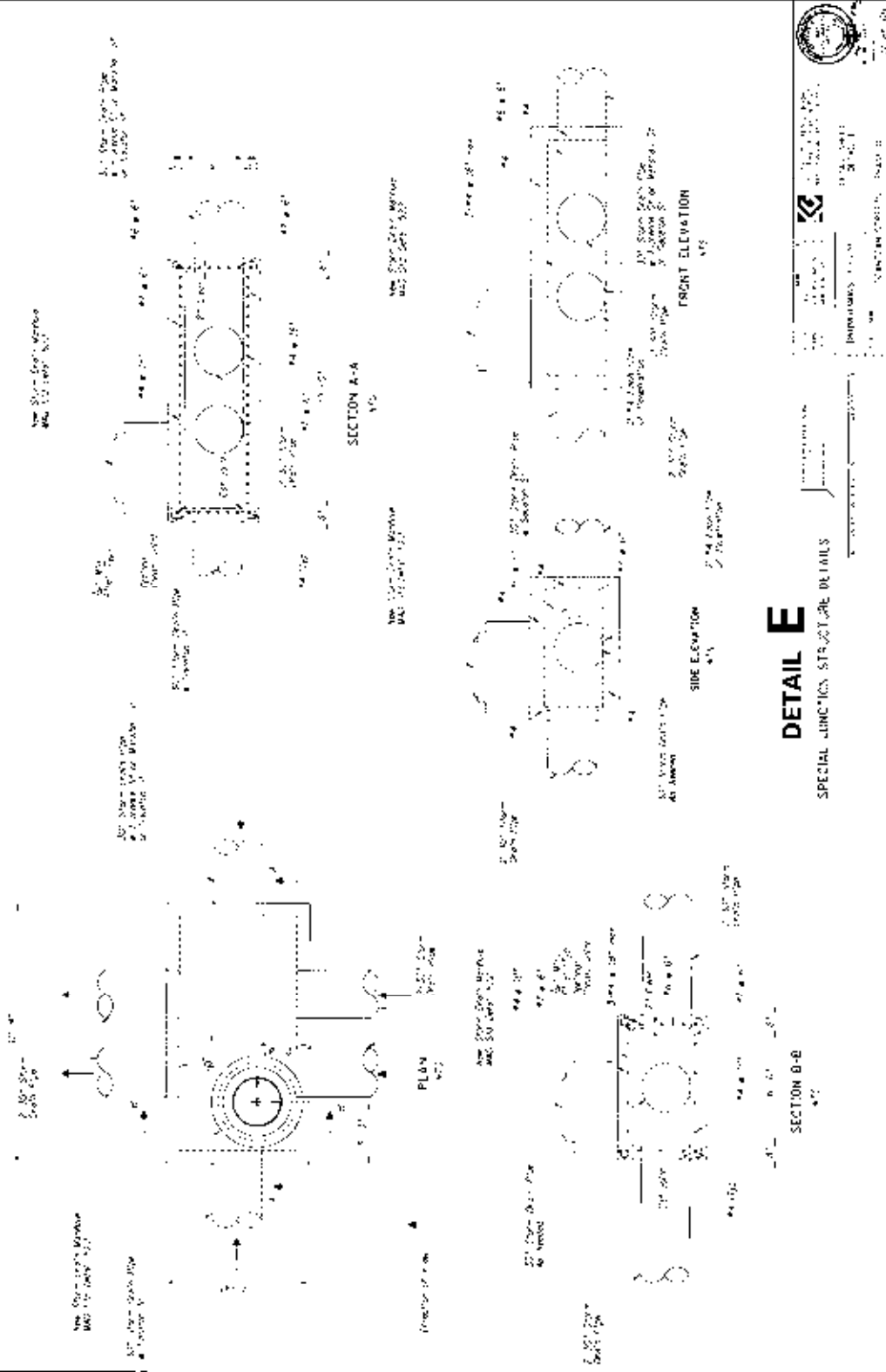


CATCH BASIN IN EXISTING SIDEWALK PLAN  
N72

**DETAIL D**  
NEW CATCH BASIN IN EXIST SIDEWALK DETAIL

NEW CATCH BASIN IN EXIST SIDEWALK DETAIL

PROFESSIONAL ENGINEER  
 STATE OF MICHIGAN  
 EXPIRES 12/31/2010  
 NO. 10000  
 MICHIGAN ENGINEERS BOARD



# DETAIL E

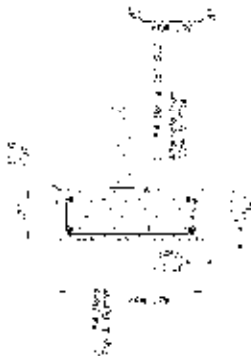
SPECIAL JUNCTION STRUCTURE DETAILS

UNIVERSITY OF CALIFORNIA  
 BERKELEY  
 CIVIL & ENVIRONMENTAL ENGINEERING DEPARTMENT  
 707 SHRED AVE. BERKELEY, CA 94720-1787  
 TEL: (415) 875-5100 FAX: (415) 875-5101  
 WWW: WWW.CEE.BERKELEY.EDU

SEE PLAN FOR CURB AND GUT  
 AND 8" DIA. CONC. CULVERT  
 UNDER  
 SIDEWALK TO BE  
 INSTALLED UNDER  
 SIDEWALK



SEE PLAN FOR CURB AND GUT



SEE PLAN FOR CURB AND GUT  
 AND 8" DIA. CONC. CULVERT  
 UNDER  
 SIDEWALK TO BE  
 INSTALLED UNDER  
 SIDEWALK

## DETAIL F

CURB WALL AT BACK OF SIDEWALK

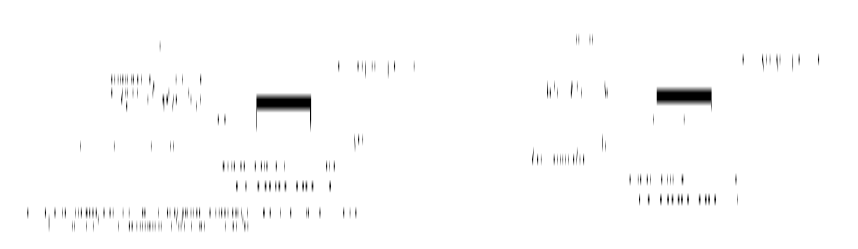
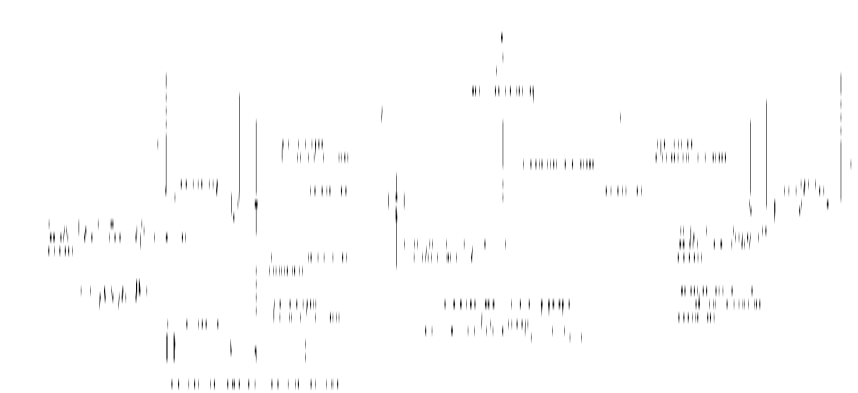
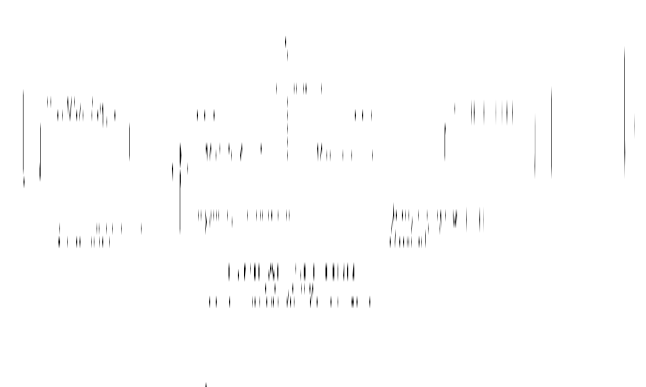
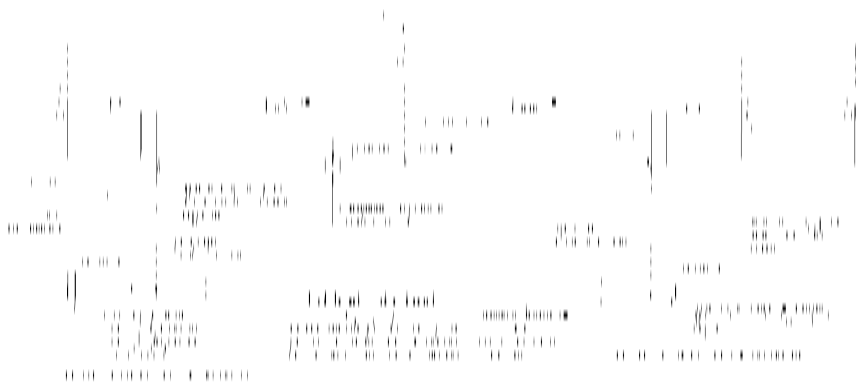
- NOTES:
1. A. and the surface to be formed.
  2. include 1/2" and 1/4" thick concrete.
  3. detail at curb to joint shall comply with the Engineer.



Professional Engineer  
 State of Florida  
 License No. 12345  
 Date of Issue: 12/31/2023







STA 23+40.00 WILSON ST  
END RECONSTRUCTION

STA 23+44.51 30.5' LT CURB CUT ST  
END RECONSTRUCTION

STA 9+88.05 (181' ST)  
BEGIN RECONSTRUCTION

STA 22+37.47 WILSON ST  
BEGIN RECONSTRUCTION

MATCH LINO STA 15+00 DWG C-14

LIST OF QUANTITIES

2000 CC 14" DIA. CONCRETE PIPES  
 2000 CC 12" DIA. CONCRETE PIPES  
 124 2000 LB. REINFORCING BARS  
 124 2000 LB. REINFORCING BARS

SCALE

James H. Smith  
 License No. 10000  
 State of California  
 Mechanical Engineering

APPROVED BY: [Signature]  
 DATE: 10/15/10

PROJECT NO.: 10-10-10-10

DATE: 10/15/10

SCALE: 1" = 40'

DATE: 10/15/10

DATE: 10/15/10





U.S. DEPARTMENT OF JUSTICE  
OFFICE OF THE INSPECTOR GENERAL  
475 ...  
WASHINGTON, D.C. 20535

CONTRACT NUMBER: 1488-77  
PAGE 15

INITIALS: [ ]  
DATE: [ ]

14

13

12

11

10

9

8

1394

1392

1390

1388

1394

1392

1390

1394

1392

1390

1394

1392

1390

1394

1392

1390

1394

1392

1390

1394

1392

1390

1394

1392

1390

1394

1392

1390

1394

1392

1390

1394

1392

1390

1394

1392

1390

1394

1392

1390

1394

1392

1390

1394

1392

1390

1394

1392

1390

1394

1392

1390

1394

1392

1390

1394

1392

1390

1394

1392

1390

1394

1392

1390

1394

1392

1390

1394

1392

1390

1394

1392

1390

1394

1392

1390

1394

1392

1390

1394

1392

1390

1394

1392

1390

1394

1392

1390

1394

1392

1390

1394

1392

1390

1394

1392

1390

1394

1392

1390

1394

1392

1390

1394

1392

1390

1394

1392

1390

1394

1392

1390

1394

1392

1390

1394

1392

1390

1394

1392

1390

1394

1392

1390

1394

1392

1390

1394

1392

1390

1394

1392

1390

1394

1392

1390

1394

1392

1390

1394

1392

1390

1394

1392

1390

1394

1392

1390

1394

1392

1390

1394

1392

1390

1394

1392

1390

1394

1392

1390

1394

1392

1390

1394

1392

1390

1394

1392

1390

1394

1392

1390

1394

1392

1390

1394

1392

1390

1394

1392

1390

1394

1392

1390

1394

1392

1390

1394

1392

1390

1394

1392

1390

1394

1392

1390

1394

1392

1390

1394

1392

1390

1394

1392

1390

1394

1392

1390

1394

1392

1390

1394

1392

1390

1394

1392

1390

1394

1392

1390

1394

1392

1390

1394

1392

1390

1394

1392

1390

1394

1392

1390

1394

1392

1390

1394

1392

1390

1394

1392

1390

1394

1392

1390

1394

1392

1390

1394

1392

1390

1394

1392

1390

1394

1392

1390

1394

1392

1390

1394

1392

1390

1394

1392

1390

1394

1392

1390

1394

1392

1390

1394

1392

1390

1394

1392

1390

1394

1392

1390

1394

1392

1390

1394

1392

1390

1394

1392

1390

1394



1396	47101 M 7 2010-01-16	47101 M 7 2010-01-16	47101 M 7 2010-01-16	47101 M 7 2010-01-16	47101 M 7 2010-01-16	47101 M 7 2010-01-16
1394						
1392						
1390						
1396	55252 M 3 2010-01-16	55252 M 3 2010-01-16	55252 M 3 2010-01-16	55252 M 3 2010-01-16	55252 M 3 2010-01-16	55252 M 3 2010-01-16
1394						
1392						
1390						
1396	47101 M 7 2010-01-16	47101 M 7 2010-01-16	47101 M 7 2010-01-16	47101 M 7 2010-01-16	47101 M 7 2010-01-16	47101 M 7 2010-01-16
1394						
1392						
1390						



NATIONAL ARCHIVES AND RECORDS ADMINISTRATION  
 COLLEGE PARK, MARYLAND 20740  
 1-800-826-4000  
 WWW.NATIONALARCHIVES.GOV  
 2010-01-16 10:10:52 AM  
 1396



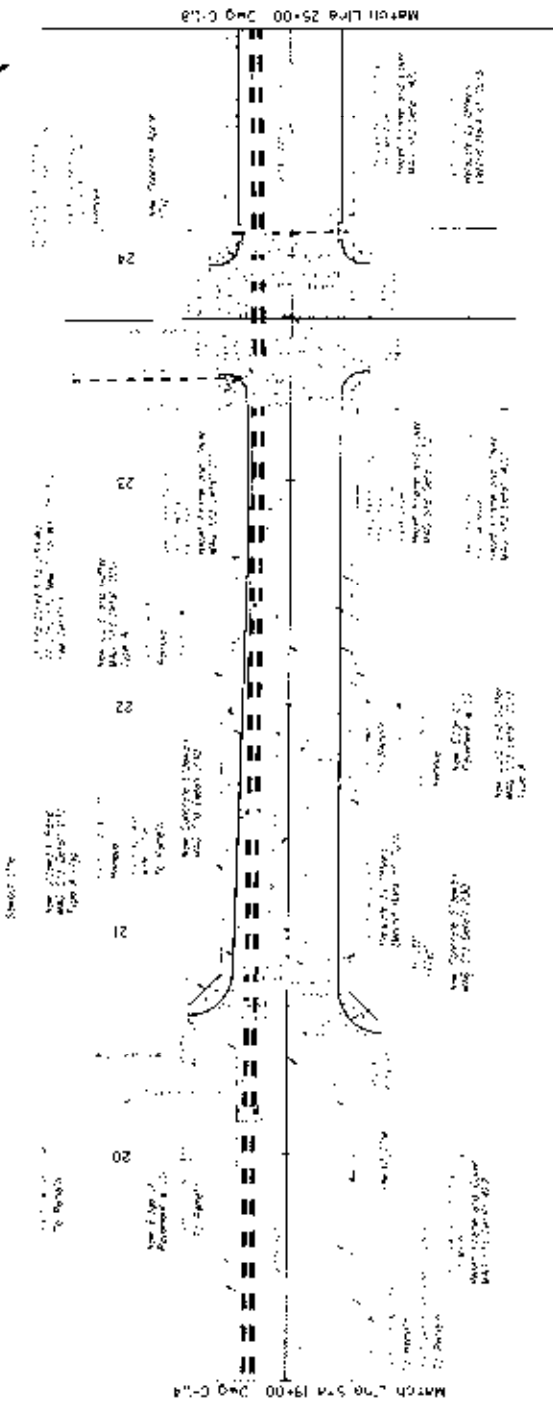
STATE OF CALIFORNIA  
 PROFESSIONAL ENGINEER  
 No. 10000  
 CIVIL ENGINEERING  
 License No. 10000  
 State of California  
 License No. 10000

PROJECT: [Illegible]  
 SHEET: [Illegible]  
 DATE: [Illegible]

DESIGNED BY: [Illegible]  
 CHECKED BY: [Illegible]  
 APPROVED BY: [Illegible]

LIST OF QUANTITIES

- 1. [Illegible]
- 2. [Illegible]
- 3. [Illegible]
- 4. [Illegible]
- 5. [Illegible]
- 6. [Illegible]
- 7. [Illegible]
- 8. [Illegible]
- 9. [Illegible]
- 10. [Illegible]
- 11. [Illegible]
- 12. [Illegible]
- 13. [Illegible]
- 14. [Illegible]
- 15. [Illegible]
- 16. [Illegible]
- 17. [Illegible]
- 18. [Illegible]
- 19. [Illegible]
- 20. [Illegible]
- 21. [Illegible]
- 22. [Illegible]
- 23. [Illegible]
- 24. [Illegible]
- 25. [Illegible]
- 26. [Illegible]
- 27. [Illegible]
- 28. [Illegible]
- 29. [Illegible]
- 30. [Illegible]
- 31. [Illegible]
- 32. [Illegible]
- 33. [Illegible]
- 34. [Illegible]
- 35. [Illegible]
- 36. [Illegible]
- 37. [Illegible]
- 38. [Illegible]
- 39. [Illegible]
- 40. [Illegible]
- 41. [Illegible]
- 42. [Illegible]
- 43. [Illegible]
- 44. [Illegible]
- 45. [Illegible]
- 46. [Illegible]
- 47. [Illegible]
- 48. [Illegible]
- 49. [Illegible]
- 50. [Illegible]



SEE SHEET [Illegible]  
 FOR [Illegible]

SEE SHEET [Illegible]  
 FOR [Illegible]

SEE SHEET [Illegible]  
 FOR [Illegible]

MATCH LINE 25+00 D&G C-18

MATCH LINE 19+00 D&G C-14





27-17-60

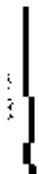


DISTRICT OF COLUMBIA  
 WASHINGTON, D. C. 20315  
 PROJECT NO. 62-00-0000  
 DRAWING NO. 27-17-60

CONTRACT NO. 62-00-0000  
 SECTION 01100 - CONSTRUCTION

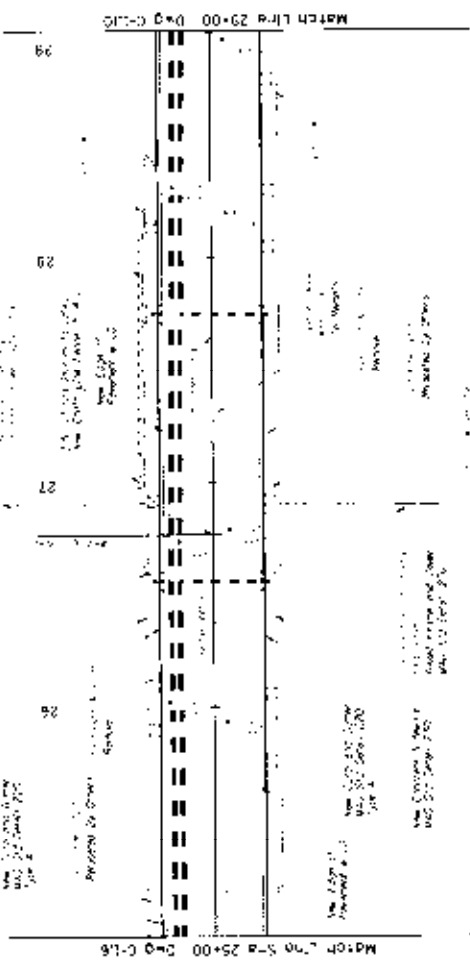
TITLE: CONSTRUCTION OF  
CONCRETE  
CONCRETE

PREPARED BY: U.S. Army Corps of Engineers  
 DRAWN BY: U.S. Army Corps of Engineers  
 CHECKED BY: U.S. Army Corps of Engineers  
 DATE: 10/1/60



LIST OF QUANTITIES

- 1.000 cu yd. Concrete
- 1.000 cu yd. Gravel
- 1.000 cu yd. Sand
- 1.000 cu yd. Cement
- 1.000 cu yd. Water
- 1.000 cu yd. Formwork
- 1.000 cu yd. Reinforcement
- 1.000 cu yd. Labor
- 1.000 cu yd. Equipment
- 1.000 cu yd. Transportation
- 1.000 cu yd. Miscellaneous



U.S. Army Corps of Engineers  
 District of Columbia  
 Washington, D. C. 20315

U.S. Army Corps of Engineers  
 District of Columbia  
 Washington, D. C. 20315





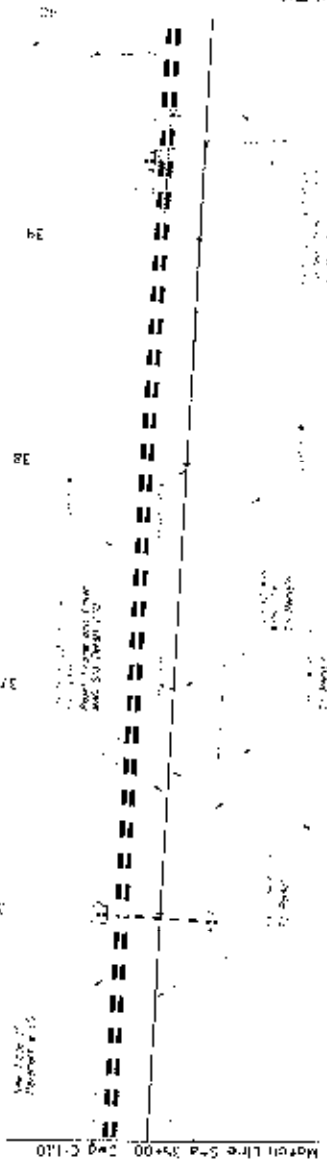
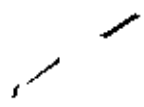






DEPARTMENT OF TRANSPORTATION  
 PENNSYLVANIA STATE HIGHWAY DEPARTMENT  
 STATE COLLEGE, PENNSYLVANIA

STA 28+41.52  
 END CURB AND OVERLAY  
 ROAD END



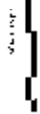
Notes & Remarks:  
 1. New 12' x 12' concrete curb and gutter  
 2. New 12' x 12' concrete curb and gutter  
 3. New 12' x 12' concrete curb and gutter

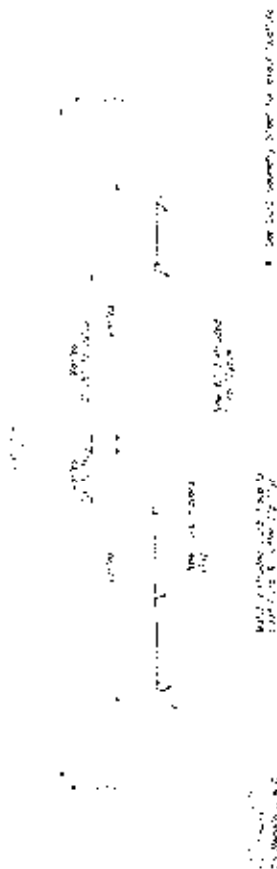
New 12' x 12' concrete curb and gutter

March Line S-d 3+00  
 C-110

LIST OF QUANTITIES

- 1. New 12' x 12' concrete curb and gutter
- 2. New 12' x 12' concrete curb and gutter
- 3. New 12' x 12' concrete curb and gutter
- 4. New 12' x 12' concrete curb and gutter
- 5. New 12' x 12' concrete curb and gutter
- 6. New 12' x 12' concrete curb and gutter
- 7. New 12' x 12' concrete curb and gutter
- 8. New 12' x 12' concrete curb and gutter
- 9. New 12' x 12' concrete curb and gutter
- 10. New 12' x 12' concrete curb and gutter





TYPICAL SECTION

SEE PAGE 100 FOR DETAILS



COMPILED BY

DATE

SCALE



New Outside curb  
along existing curb  
see detail 2

New 12" round curb  
along existing curb  
see detail 2

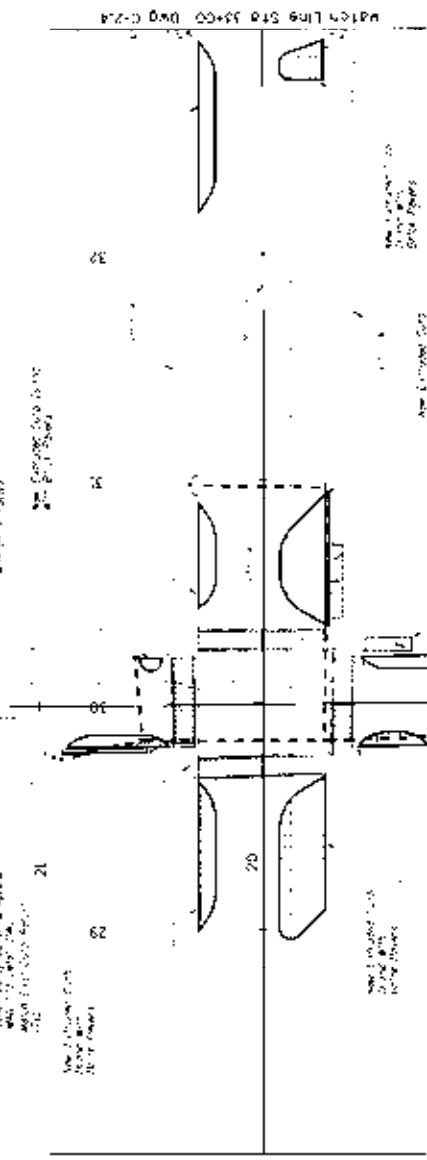
Asphalt & concrete  
curb, 12" height & apron  
width 12" (see detail 2)  
along existing curb  
see detail 2

21

New 12" round curb  
along existing  
curb see detail 2

23

Match Line S+D 28+00 DWG S-212



New Outside curb  
along existing curb  
see detail 2

New 12" round curb  
along existing curb  
see detail 2

Asphalt & concrete  
curb, 12" height & apron  
width 12" (see detail 2)  
along existing curb  
see detail 2

21

New 12" round curb  
along existing  
curb see detail 2

19

New 12" round curb  
along existing  
curb see detail 2

New 12" round curb  
along existing  
curb see detail 2

New 12" round curb  
along existing curb  
see detail 2

New 12" round curb  
along existing curb  
see detail 2

New 12" round curb  
along existing curb  
see detail 2

Match

LIST OF QUANTITIES

- 1. 12" Round Curb
- 2. 12" Round Curb
- 3. 12" Round Curb
- 4. 12" Round Curb
- 5. 12" Round Curb
- 6. 12" Round Curb
- 7. 12" Round Curb
- 8. 12" Round Curb
- 9. 12" Round Curb
- 10. 12" Round Curb
- 11. 12" Round Curb
- 12. 12" Round Curb
- 13. 12" Round Curb
- 14. 12" Round Curb
- 15. 12" Round Curb
- 16. 12" Round Curb
- 17. 12" Round Curb
- 18. 12" Round Curb
- 19. 12" Round Curb
- 20. 12" Round Curb
- 21. 12" Round Curb
- 22. 12" Round Curb
- 23. 12" Round Curb
- 24. 12" Round Curb
- 25. 12" Round Curb
- 26. 12" Round Curb
- 27. 12" Round Curb
- 28. 12" Round Curb
- 29. 12" Round Curb
- 30. 12" Round Curb
- 31. 12" Round Curb
- 32. 12" Round Curb
- 33. 12" Round Curb
- 34. 12" Round Curb
- 35. 12" Round Curb
- 36. 12" Round Curb
- 37. 12" Round Curb
- 38. 12" Round Curb
- 39. 12" Round Curb
- 40. 12" Round Curb
- 41. 12" Round Curb
- 42. 12" Round Curb
- 43. 12" Round Curb
- 44. 12" Round Curb
- 45. 12" Round Curb
- 46. 12" Round Curb
- 47. 12" Round Curb
- 48. 12" Round Curb
- 49. 12" Round Curb
- 50. 12" Round Curb
- 51. 12" Round Curb
- 52. 12" Round Curb
- 53. 12" Round Curb
- 54. 12" Round Curb
- 55. 12" Round Curb
- 56. 12" Round Curb
- 57. 12" Round Curb
- 58. 12" Round Curb
- 59. 12" Round Curb
- 60. 12" Round Curb
- 61. 12" Round Curb
- 62. 12" Round Curb
- 63. 12" Round Curb
- 64. 12" Round Curb
- 65. 12" Round Curb
- 66. 12" Round Curb
- 67. 12" Round Curb
- 68. 12" Round Curb
- 69. 12" Round Curb
- 70. 12" Round Curb
- 71. 12" Round Curb
- 72. 12" Round Curb
- 73. 12" Round Curb
- 74. 12" Round Curb
- 75. 12" Round Curb
- 76. 12" Round Curb
- 77. 12" Round Curb
- 78. 12" Round Curb
- 79. 12" Round Curb
- 80. 12" Round Curb
- 81. 12" Round Curb
- 82. 12" Round Curb
- 83. 12" Round Curb
- 84. 12" Round Curb
- 85. 12" Round Curb
- 86. 12" Round Curb
- 87. 12" Round Curb
- 88. 12" Round Curb
- 89. 12" Round Curb
- 90. 12" Round Curb
- 91. 12" Round Curb
- 92. 12" Round Curb
- 93. 12" Round Curb
- 94. 12" Round Curb
- 95. 12" Round Curb
- 96. 12" Round Curb
- 97. 12" Round Curb
- 98. 12" Round Curb
- 99. 12" Round Curb
- 100. 12" Round Curb

- AT&T
1. See City Quantity Sheet for estimate of quantities
  2. See City Quantity Sheet for estimate of quantities
  3. See City Quantity Sheet for estimate of quantities



City of Dallas  
Department of Public Works  
Engineering Division  
1500 Marilla Street  
Dallas, Texas 75201  
Phone: (214) 670-1111  
Fax: (214) 670-1112

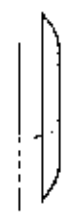




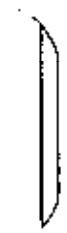
MATCH LINE STA 39+00 DWG C-24

View of Proposed  
Channel from  
Right Bank

39



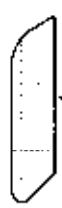
41



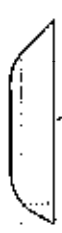
42

MATCH LINE STA 43+00 DWG C-26

View of Proposed  
Channel from  
Right Bank



View of Proposed  
Channel from  
Right Bank



Scale 1:100

LIST OF QUANTITIES

SEE PLAN FOR QUANTITIES

Notes

1. See also quantity sheet for structure and  
paving.
2. See also quantity sheet for  
ditch.



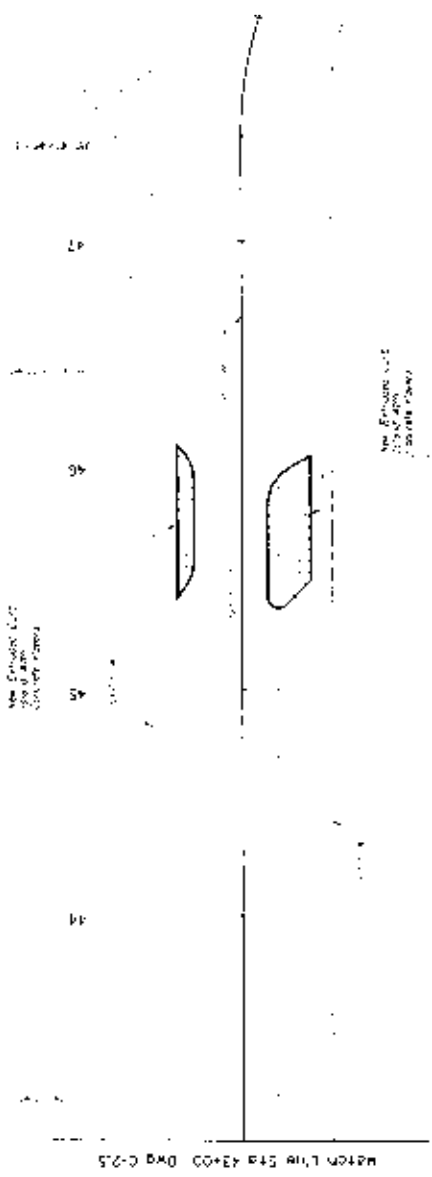
Department of Public Works

418 West 10th Street  
Saskatoon, Saskatchewan  
S7N 3A5

2007-09-11 11:11 AM



11/17/07



570-0 BAO CODEY R45 R/L1 U047W

**LIST OF QUANTITIES**

NO. OF SQ. FT. OF CONCRETE WORK  
 NO. OF SQ. FT. OF ASPHALT PAVEMENT

- NOTES:
1. SEE CITY ORDINANCE NUMBER 1000 FOR R45 AND R/L1 ZONING.
  2. SEE CHAPTER 16 FOR EXISTING AND PROPOSED UTILITIES.

SCALE


 CITY OF SEATTLE  
 DEPARTMENT OF PUBLIC WORKS  
 3400 1ST AVENUE, SUITE 1000  
 SEATTLE, WA 98101  
 PH: 206.468.1000 FAX: 206.468.1001  
 WWW.CITYOFSEATTLE.GOV



PROJECT NO. 10000  
 SHEET NO. 10000  
 DATE: 10/10/00







100-108-101

Scale 1:100



NATIONAL BUREAU OF STANDARDS  
Gaithersburg, Maryland 20899

PHOTODUPLICATION SERVICE  
COST \$1.00 PER PAGE  
NBS MONITORING SYSTEMS DIVISION  
NBS-100-108-101

SECTION 101111 - PART II

See also: 101111-101  
101111-102  
101111-103

61

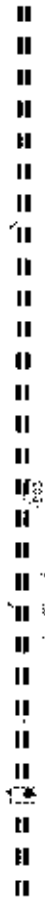
1. The Manufacturer  
2. The Manufacturer  
3. The Manufacturer

61

1. The Manufacturer  
2. The Manufacturer  
3. The Manufacturer

61

61



1. The Manufacturer  
2. The Manufacturer  
3. The Manufacturer

1. The Manufacturer  
2. The Manufacturer  
3. The Manufacturer

1. The Manufacturer  
2. The Manufacturer  
3. The Manufacturer

101111-101

101111-101  
101111-102  
101111-103

