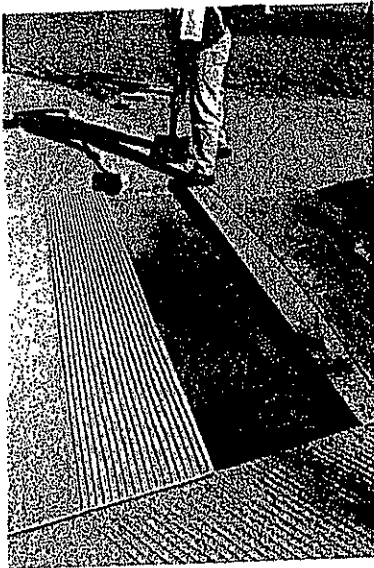
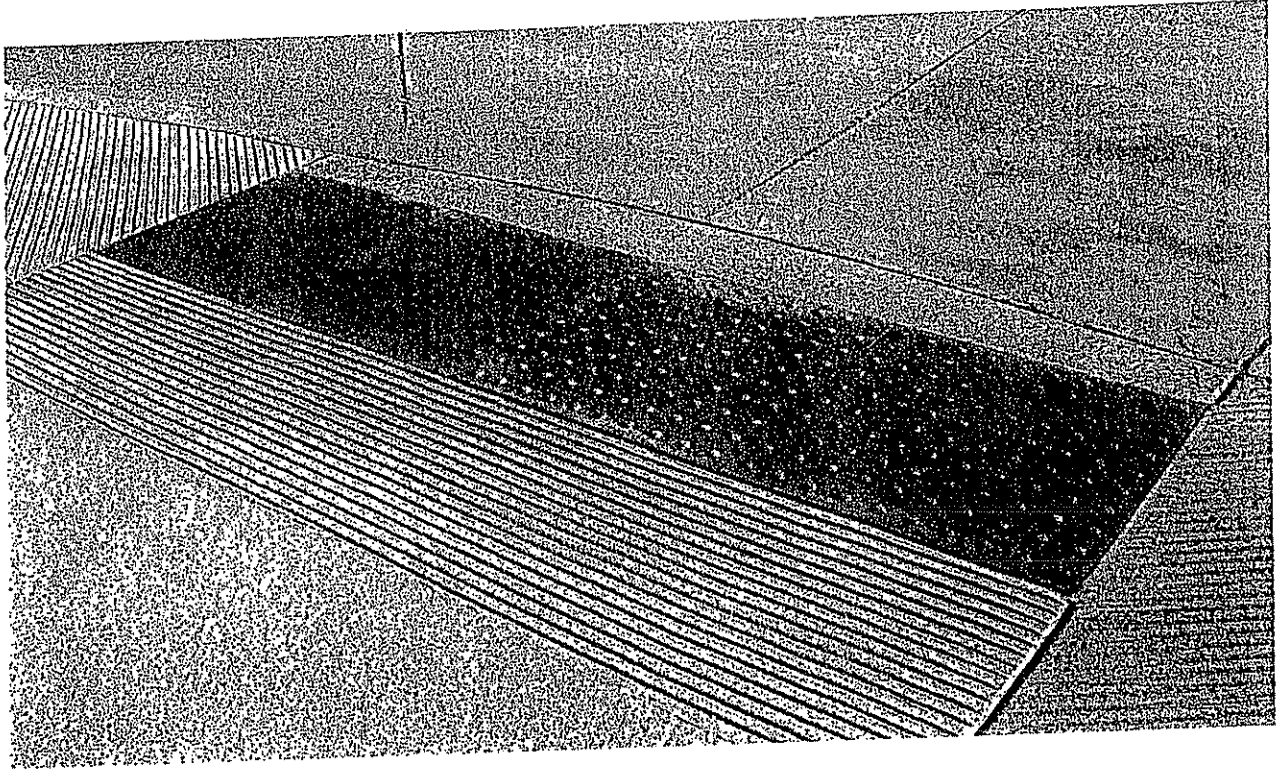


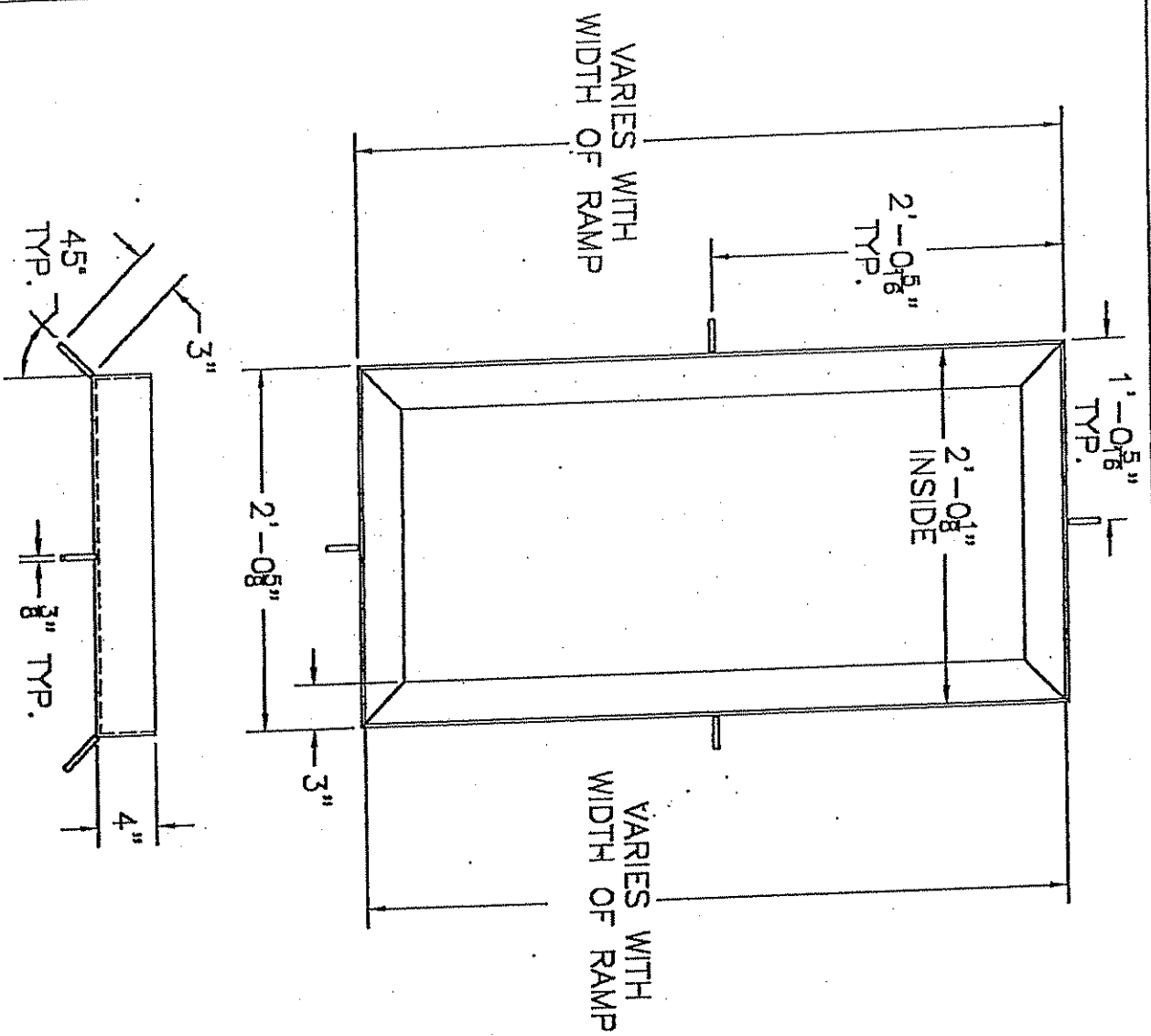
Manufacturer	Address	Phone Number	Website
→ TekWay	3296 E. Hemishpere Loop Tucson, AZ 85706	866-439-3216 520-547-3510	stronggo.com
Ramp Dome Systems	7655 E. Redfield Rd., #5 Scottsdale, AZ 85260	602-791-2818	*
→ ARCIS Cast in Foot	1833 E. Baseline Rd., Ste. 257 Gilbert, AZ 85233	928-303-6460 480-226-2074	arcis.com

Example

RampDome Systems® Installation Process



Patent Number 6,939,078
RampDome Systems (p) 602-791-2818



VARIES WITH
WIDTH OF RAMP

VARIES WITH
WIDTH OF RAMP

FRAME:
WELDMENT CONSISTING OF:
(2) 3" X 4" X 1/4" X (LENGTH VARIES) STL ANGLE
(2) 3" X 4" X 1/4" X 24 5/8" LONG STL ANGLE
(4) #3 REBAR X 3" LONG

FRAME FOR PRECAST TRUNCATED DOMES

RAMPDOME SYSTEMS L.L.C.

DATE: 6/2/04

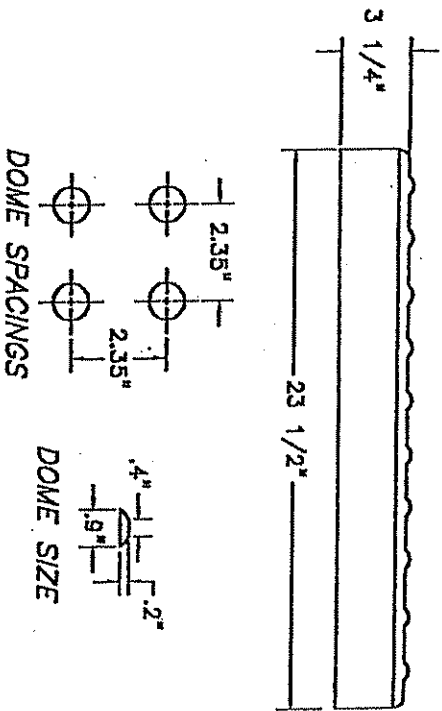
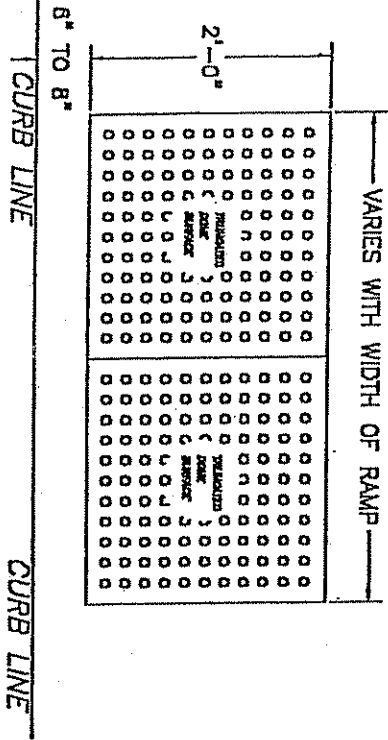
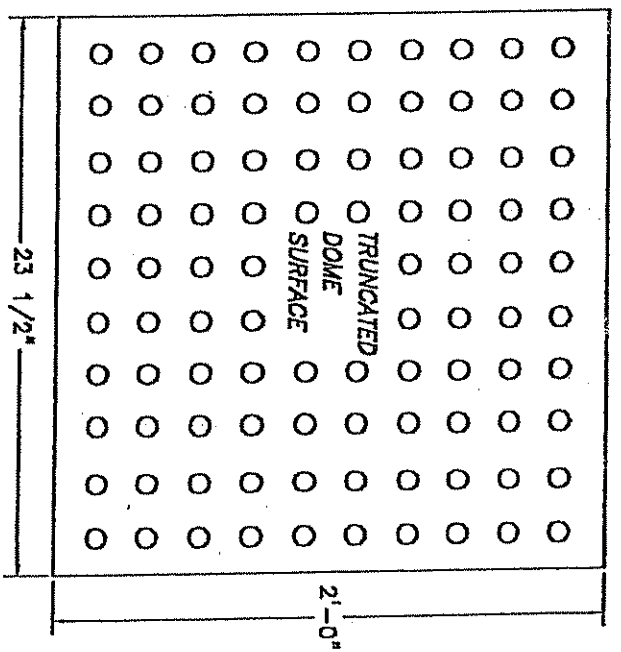
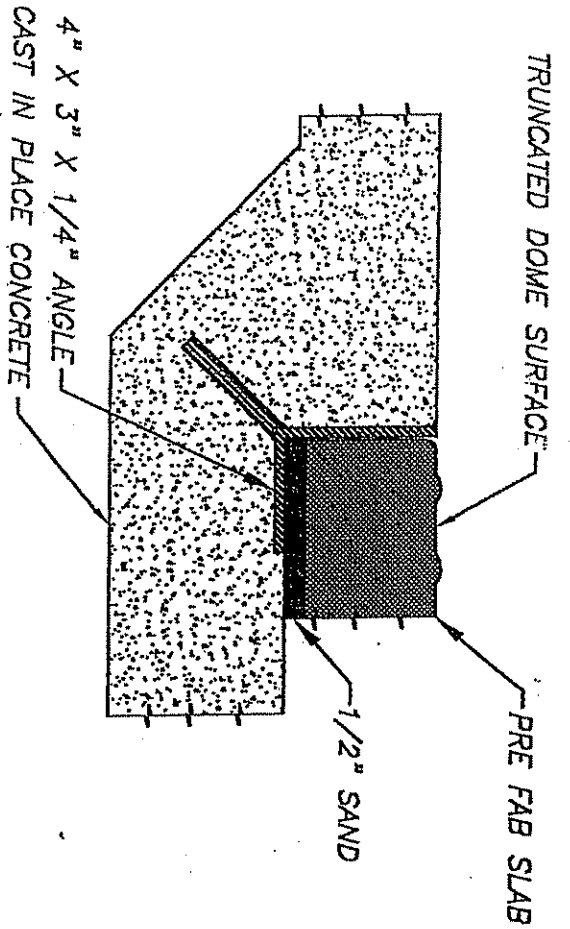
SCALE: NTS

SHEET

PH: 602-791-2818

REV #

2 OF 2



PRECAST TRUNCATED DOMES	RAMPDOME SYSTEMS L.L.C.	DATE: 1/26/05	SCALE: NTS	SHEET
PH. 602-791-2818	www.RampDome.com		REV #	1 OF 1

Atlas Construction Supply, Inc.

1611 South 27th Ave
Phoenix, AZ 85009-6420

Ph: 928-303-6460
Fx: 928-778-1595

Fax Transmittal Form

To: City of Casa Grande From: Stacy Walgraeve
Attention: LARRY

Date: 9-23-08

Ph: 1-520-421-8630
Fx: 1-520-421-8631

REFERENCE: Detectable Warning Panels

Message:

Per our conversation, attached you will find information on ADA Arcis Tactiles, the dependable long-term concrete solution meeting ADA Federal guidelines for detectable warning. I think you will find the web site's and product information, interesting and beneficial for the success of your future projects.

For more information on Atlas Construction Supply you can also go to our web site at www.atlasform.com You may also go www.arcis-corp.com for more information on ADA Arcis panel.

Atlas Construction Supply may have other products that would be of interest to you such DOT patching Materials, NSF Certified & GreenSpec listed concrete curing compound and form release as well as concrete forming & shoring systems, concrete accessories, tilt-up and precast products, concrete chemicals and restoration products.

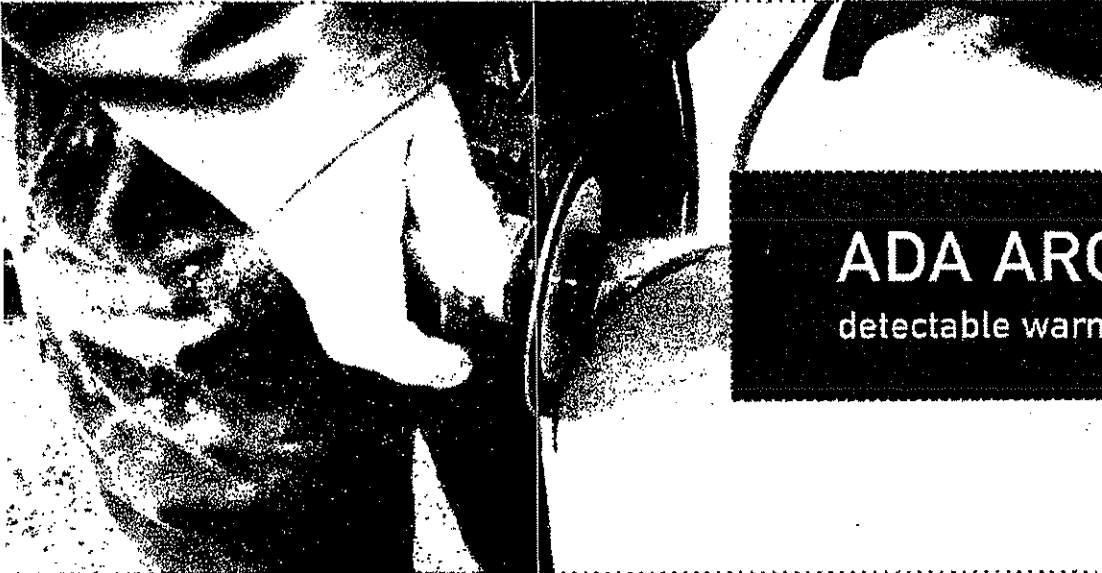
Atlas has a superior record of service and supply performance. So should your current construction requirements include ADA Detectable Warning Panels, Concrete Accessories or Formwork, please contact us. We would be happy to tailor a proposal to match your project needs. Please contact me anytime at stacywalgraeve@atlasform.com – or on my cell phone listed below.

Best regards,

Sales Representative
Atlas Construction Supply



stacywalgraeve@atlasform.com
www.atlasform.com
(928)303-6460 Cell 928)778-1595 Fax

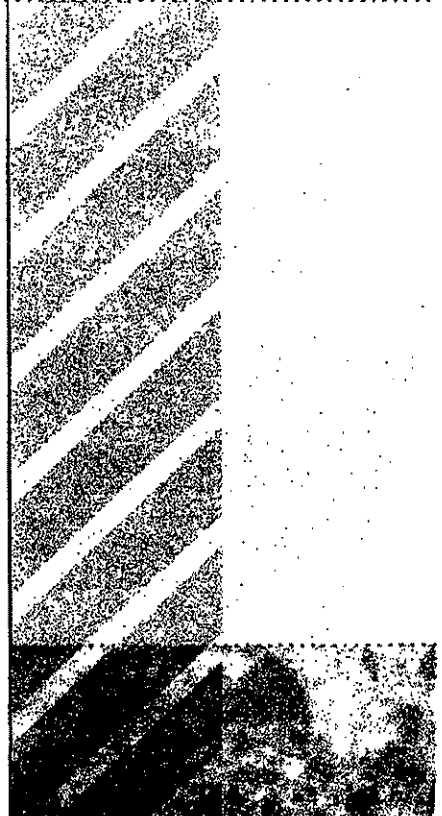


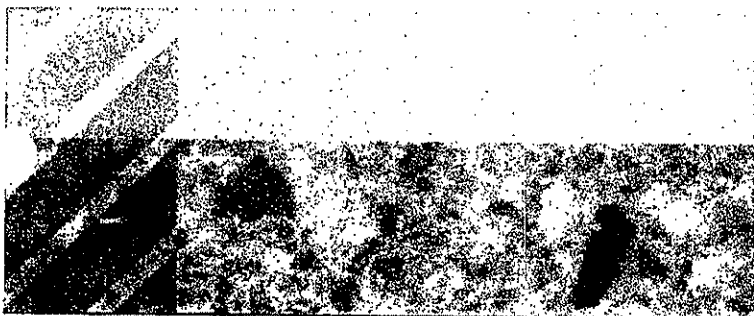
ADA ARCIS TACTILE
 detectable warning panels

The longest lasting, nicest
 looking detectable warning: meeting
 standards of ADAAG 4.29

Prestressed with high strength
 stainless steel

High Strength cast stone panels
 expand and contract with sidewalk
 concrete material





ADA ARCIS TACTILE

detectable warning panels

More than "compliant"

Our architecturally finished cast stone product adds to aesthetics while performing the vital safety function of highlighting danger areas of complicated intersections, transit malls, reflecting pools and crossings.

Premium cast stone mix combines high strength and abrasion resistance with entrained air for freeze/thaw resistance. Our cast stone mix designs are proportioned using a computer model developed by Arcis. The model allows us to proportion the optimal combination of aggregate shapes and sizes to create an extremely dense material. All our aggregates are graded and washed. Our mixes utilize quartz and granite having extremely low absorption characteristics (less than 1% by weight) and extremely high strength and abrasion resistance. All components are weighed on calibrated scales and mixed in a high shear planetary mixer with microwave sensors for water control. Our products are cast on drop tables which can compact very dry concrete, allowing us to use a low water cement ratio (less than .3), a key to high performance concrete. Along with several special additives and a controlled heat curing process the result is premium high-tech cast stone.

Material Specifications:

Compressive stress resulting from prestress 220 PSI both directions

Cast Stone compressive strength greater than 9000 psi average at 56 days ASTM C140-98b

Constructed unit flexural strength; modulus of rupture greater than 1200 psi ASTM C293-94

Absorption less than 5.3% ASTM C140

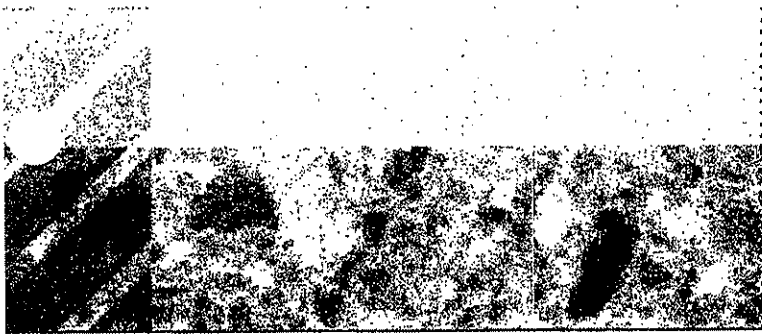
Abrasion resistance; Coefficient of loss .1 cm³/cm² ASTM C418-98

Freeze-Thaw resistance; less than 1% loss after 75 cycles, ASTM C1262d-98, 3% NaCl solution

Mechanical anchor pull out strength greater than 900 lbs each

Mechanical anchor push through strength greater than 1200 lbs each

Slip resistance greater than .8, ASTM C1028-96

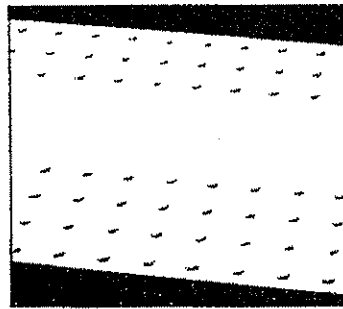


Product Details

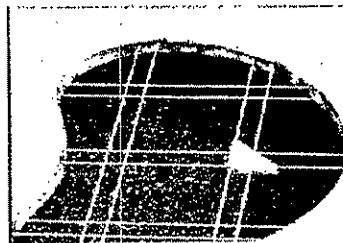
Anchored to the base material with headed studs



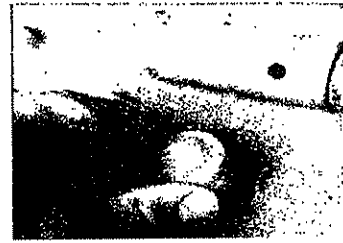
Many configurations Available

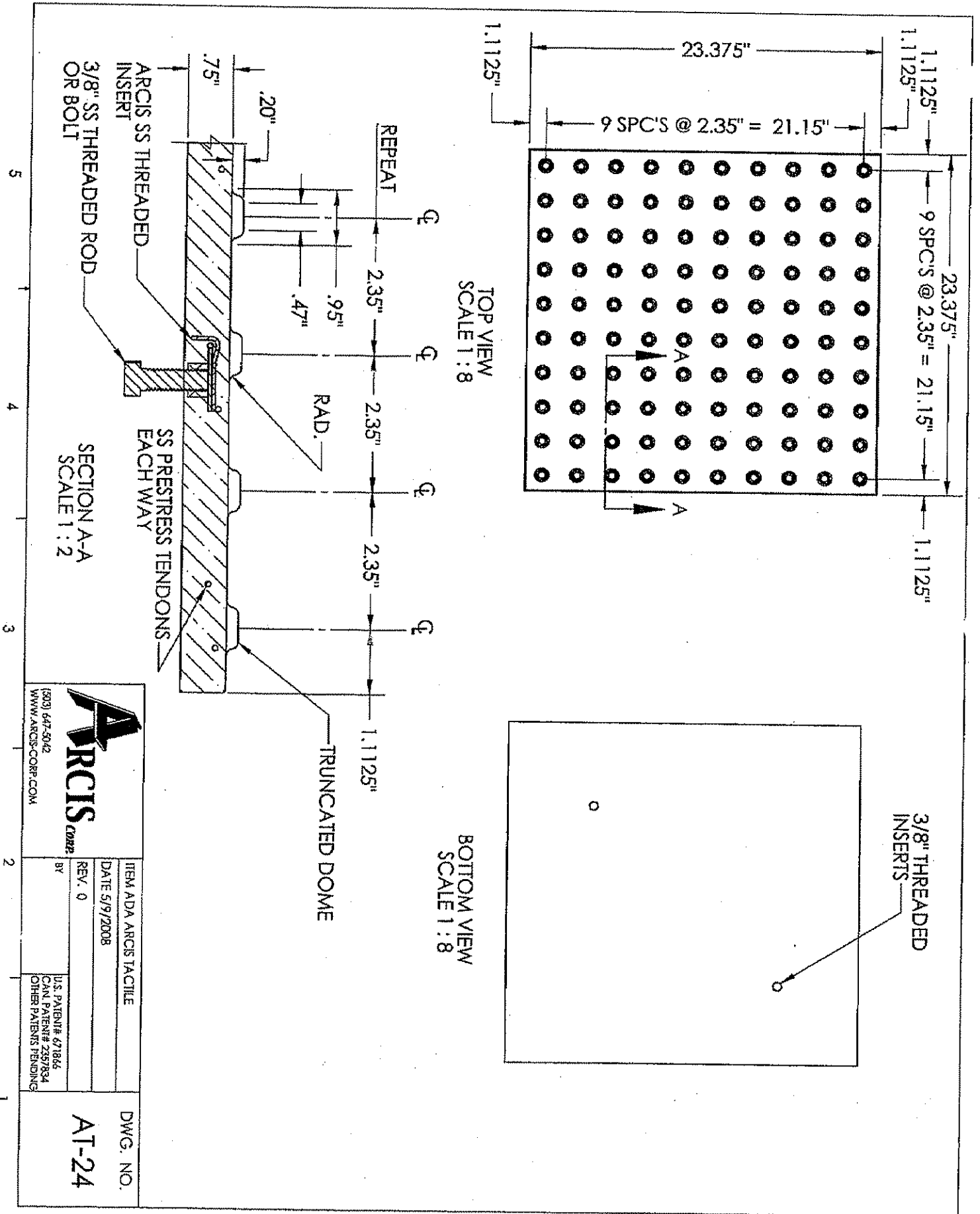


Prestressed with high strength stainless steel



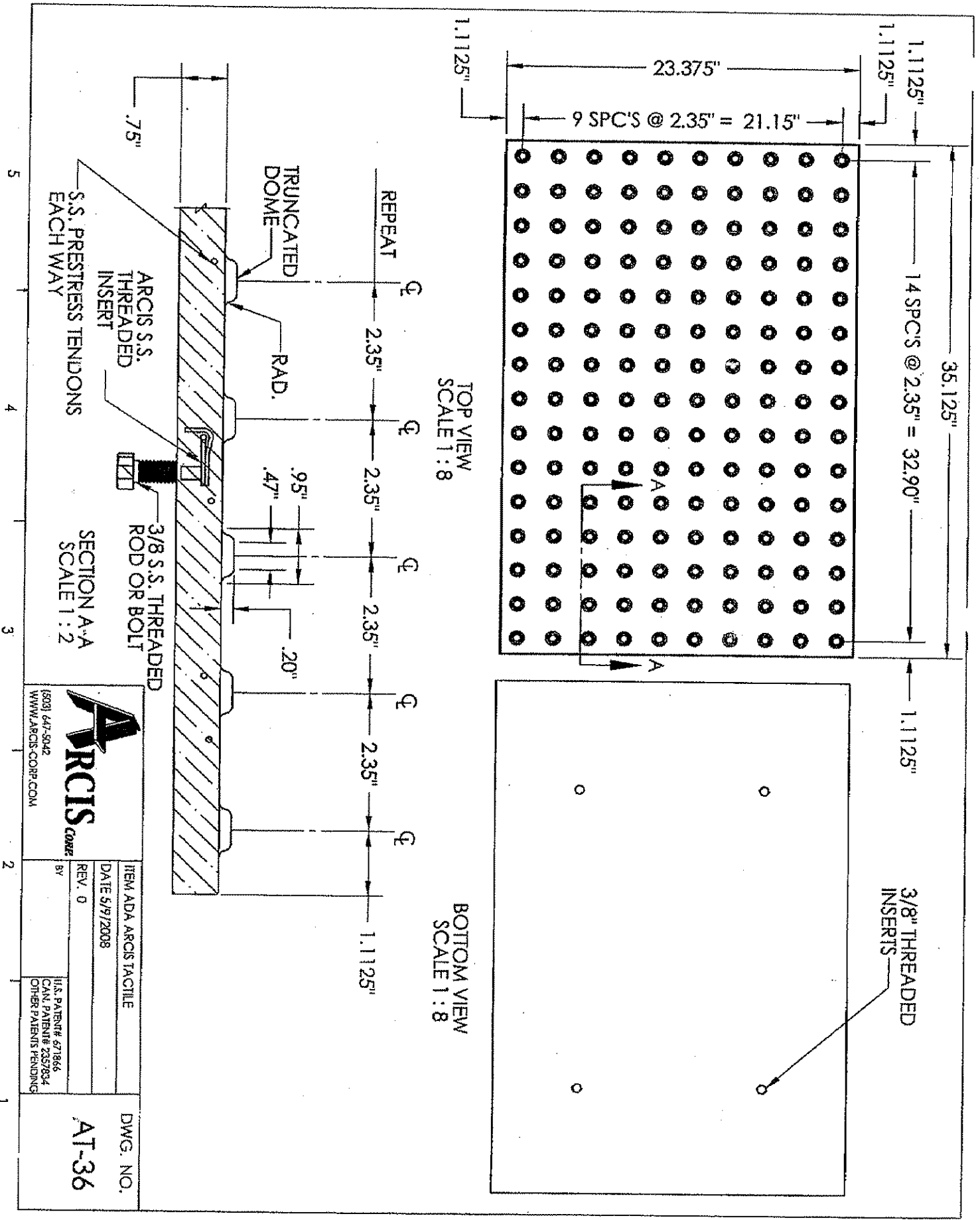
Replace entire panels or repair individual domes





(503) 647-5042
WWW.ARCIS-CORP.COM

ITEM ADA ARCIS TACTILE	DWG. NO.
DATE 5/9/2008	AT-24
REV. 0	
BY	
U.S. PATENT# 671866 CAN. PATENT# 2397834 OTHER PATENTS PENDING	



ITEM ADA ARCIS TACTILE		DWG. NO. AT-36
DATE 5/9/2008	REV. 0	
U.S. PATENT# 671866 CAN. PATENT# 2357834 OTHER PATENTS PENDING		

(503) 647-5042
WWW.ARCIS-CORP.COM